



Number 234 * COLLECTION OF MARITIME PRESS CLIPPINGS *** Thursday 22-08-2013**

News reports received from readers and Internet News articles copied from various news sites.

Oesterbaai Survey & Consultancy is a certified Shield Group Company which is specialised in Asbestos and Inventory of Hazardous Materials (IHM) Surveys and possible follow-up.

For more information please contact us at +31 (0)10 208 84 44

WWW.OESTERBAAI.EU | WWW.SHIELD-GROUP.EU

ASBESTOS AND IHM SURVEYS
CONFORM IMO & SOLAS STANDARDS

 **OESTERBAAI**



Crowley tugs OCEAN WAVE and OCEAN WIND taking departure from Corpus Christi, Texas with LUCIUS SPAR starting the 250 mile tow to her new home in the Gulf of Mexico. Not pictured is the OCEAN SUN that is escorting the tow and will participate in the station keeping phase of the project and Signet Maritime tugs performing assist duties. Photo : by Tim Burdick - (Crowley assigned photographer) ©

Your feedback is important to me so please drop me an email if you have any photos or articles that may be of interest to the maritime interested people at sea and ashore
PLEASE SEND ALL PHOTOS / ARTICLES TO :

newsclippings@gmail.com

If you don't like to receive this bulletin anymore :

To unsubscribe click [here](#) (English version) or visit the subscription page on our website.

<http://www.maasmondmaritime.com/uitschrijven.aspx?lan=en-US>

EVENTS, INCIDENTS & OPERATIONS

AFFORDABLE & SECURE LAY-UP



Harbour G950 • Griendweg 14, 's-Gravendeel • T: +31 (0)85 - 877 91 14 • F: +31 (0)85 - 877 91 15

info@dutchharbour.nl www.dutchharbour.nl



The backhoe dredge **MARICAVOR** deepening the entrance channel for Sochi Main Port - Photo : Dirk van Uiter ©

Rosneft Completes Kara Sea Expedition

Russia's Rosneft and the Arctic and Antarctic Research Institute completed their expedition in the Kara Sea on August 16. Experts spent 30 days at sea to conduct a large scale met-ocean survey, reads a note released on Monday.

Rosneft collected met-ocean data like wave, currents, sea level fluctuation and wind velocity for exploratory drilling in the Vostochno-Prinovozemelsky- licence bloc and contemporary planning of close license blocks.

'Kara-Summer 2013 is the third expedition commissioned by Rosneft. In August alone, Rosneft used 12 vessels, three aircraft, air drones, submersibles, subsea and floating self-contained stations, satellite surveillance systems and other equipment for the Kara Sea studies,' reads the note. In 2013, Rosneft's total investments in the Kara Sea studies will exceed 1.5 bln rubles (30 million euros). The explorations in the Kara Sea are part of a wider mid-term plan to develop offshore projects in the Fas East. **Source: Natural Gas Europe**



The **ARCTIC DAWN** under tow of the tug **WATERSTROOM** and pushed by the pusher tug **WATERLELIE** enroute the IJmuiden locks for further transportation to Urk for outfitting – **Photo : Marcel Coster ©**

Seatankers receives third ULSTEIN designed PSV

The third **ULSTEIN** designed platform supply vessel of the **PX105 design** for Seatankers, '**SEA FORTH**', was delivered on 16 August 2013 from the **Zhejiang yard** in Ningbo.



ULSTEIN delivers twelve design and equipment packages to the Chinese yard, where all the vessels for **Seatankers Group** will be constructed. The packages include design, engineering and equipment supplies. The ships comply with the DNV requirements of the Clean or Clean Design standards. The ship is designed with the patented X-BOW® hull line design. These vessels have low vibration levels, resulting in increased comfort, and no speed loss due to the elimination of bow wave impact. The vessels can maintain higher speed even in foul weather, and the operational window is increased.

"In this project, **ULSTEIN** employees in Norway, Poland, Croatia as well as on site in Ningbo have teamed up for designing, engineering, commissioning and completion of the vessel", comments Project Manager in **Ulstein Design & Solutions**, Johannes Røren. **ZJ2015, 'SEA FORTH'**, measures 88.9 metres long and 19 metres in

the beam. She has a dead weight of 4,500 tonnes and a loading deck area of approximately 1,000 m². The vessel is equipped with a diesel-electric propulsion system. She is fitted with Azipull 100 propellers, and can reach speeds of 15.5 knots. **SEA FORT** has a comprehensive electrical and automation package delivered by Ulstein Power & Control, an integrated complete solution that includes the propulsion system, main switchboards, distribution switchboards, the communication system ULSTEIN COM®, the bridge solution ULSTEIN BRIDGE™ and the automation system ULSTEIN IAS®.



The **REGINA SEAWAYS** moored in Rostock – Photo : Huib Lievense / Ernst Lohmann ©

New services for ships in operation

RS has established an expert group for rendering technical documentation services for sea-going ships in operation. The new group is responsible for the development and review of the documents related to:

- determination of permissible scantlings of hull structure members according to the RS Rules;
- check of the ship's hull compliance with the RS Rules;
- enhanced survey programme of hull structures in compliance with the IACS Unified Requirements (Z10.1, Z10.2, Z10.3, Z10.4, Z10.5, IMO Resolution 744(18), as amended);
- assessment of ships stability according to the RS Rules when accepting the ships into the RS class.

By virtue of the expert group establishment, since August, 2013 the shipowners have an opportunity to order development or review of the above documents directly at RS. As noted by Vladimir Baranov, the Director of RS Marine Directorate: "New expert group is established for the ease of RS customers as well as for the improvement of the RS class attractiveness for the shipowners." Source: Russian Maritime Register of Shipping (RS)



The **FLEX 38 SL** crewboat **FOL VISION 1** onboard **THORCO CELEBRATION** in Cape Town –
Photo : Aad Noorland ©



The **SILJA EUROPA** in Helsinki – Photo : Huib Lievense / Ernst Lohmann ©

Biggest Shipping Line Says Emerging Market Warnings Misplaced

A.P. Moeller-Maersk A/S (MAERSKB), owner of the world's biggest shipping line, said concern that emerging markets are losing their growth momentum is overdone. "The underlying story is very good," Maersk Chief Executive Officer Nils Smedegaard Andersen said in an interview on Aug. 16. "Our expectation remains that the U.S. will be the key driver of growth, but we're also relatively optimistic on emerging markets. There is growth potential, even if we have a temporary set-back in commodity prices." Investors dumped emerging market assets last quarter amid signals

from the U.S. Federal Reserve it might scale back the stimulus that's underpinned demand for higher-yielding securities. The MSCI Emerging Market Index lost 9.1 percent in the three months through June, while the JPMorgan Emerging Markets Bonds Index dropped 5.6 percent.

The selloff also followed a collapse in China's export gains in May. In July, China's Finance Minister Lou Jiwei said the government might be able to tolerate economic growth as slow as 6.5 percent, compared with an official target of 7.5 percent. The remarks were subsequently retracted on state radio. Since then, several key indicators have signaled that growth in the largest emerging-market economy may be set to accelerate again. Industrial output in China beat analyst estimates in July while export and import figures were also stronger than forecast.



The **Maersk Mc Kinney Moller** in Rotterdam last week – **Photo : Marijn van Hoorn ©**

Middle Classes

Andersen said a key driver behind emerging market growth remains its rising household wealth, underpinning demand for imports transported in his ships. "A lot of people there are entering the middle class," he said. Gains in household wealth are also evident in the U.S., where a housing recovery is buoying consumer demand, Andersen said.

"We still believe that the U.S. will be a positive story for the coming years, in the short-term supported by more consumption following real estate prices going up and deleveraging taking place," he said. Maersk raised its earnings forecast last week for its container-shipping unit, Maersk Line, after second-quarter profit almost doubled. The company said lower fuel prices and costs offset a drop in freight rates.

Supply Glut

Maersk Line has trimmed its fleet and slowed vessel speeds to curb capacity after a supply glut drove down freight prices. The Shanghai Containerized Freight Index -- a measure of prices for cargo leaving the world's busiest port -- was 22 percent lower at \$1,133.14 at the end of June compared with a year earlier. Asia-to-Europe trade is Maersk's most important route. Maersk Line cut its forecast last week for growth in global demand for seaborne containers to as much as 3 percent from as much as 4 percent previously. Europe remains a concern, Andersen said. Though there are signs the "situation is stabilizing, we should also be careful in forecasting any significant growth for the euro zone, given that there are still deleveraging issues," Andersen said. **Source: Bloomberg**

ALSO INTERESTED IN THIS FREE MARITIME NEWSCLIPPINGS ?

PLEASE VISIT THE WEBSITE :

WWW.MAASMONDMARITIME.COM

AND REGISTER FOR FREE !

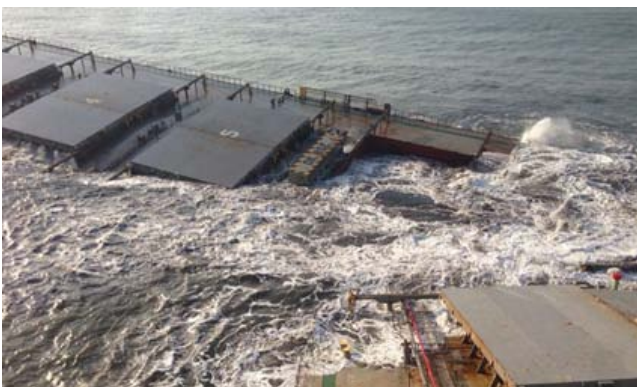


The **NORDIC ACE** arriving in Harwich - Photo : Andrew Moors – RNLI Harwich lifeboat ©



Salvaged ship sinking at sea

By : John Harvey



THE monumental 12-day operation to salvage the cargo ship that ran aground off Buffels Bay near Knysna came to naught when the vessel began to sink about 70 nautical miles off the coast last Monday

In another marine accident, the 230m-long coal carrier, the **SMART** (as seen above and below), ran aground on a sandbank off the entrance to the Richards Bay harbour last Monday afternoon. Twenty-three people were airlifted to safety.

The vessel had been trying to leave the harbour in **10-metre swells**, National Sea Rescue Institute spokesman Craig Lambinon told Sapa. The captain gave the order to abandon ship as “the structural integrity of the ship was compromised”. Officials were sent to begin evaluations to save the ship.

Meanwhile, the **KIANI SATU**, carrying more than 300 tons of oil and 15 000 tons of rice, began taking on water when damage to it worsened yesterday morning. “She is sinking. We are going to have to wave her goodbye,” said Captain Nigel Campbell, of the South African Maritime Safety Authority. Earlier, the salvage crew on board the ship, which had been refloated on Saturday after lying 50 metres off the Buffels Bay beach for more than a week, were airlifted from the vessel. A decision was taken for the salvage tug to tow the vessel further out to sea, to where the depth was 1000 metres.



The **KIANI SATU** aground off Buffels Bay near Knysna

Campbell said at this depth the water temperature was between 3°C and 5°C, which it was hoped would be cold enough to “solidify” the oil on board the ship so that it could limit the spread of oil. “When she sinks it will be up to the Department of Environmental Affairs to monitor the situation,” Campbell said.

The Department of Environmental Affairs’ spokesman, Zolile Nqayi, said it had been accepted that the vessel would sink. Nqayi said the department had been assured by the ship’s German owners, Esmeralda Schiffahrts, that all the costs – including those involved in the ship’s sinking – would be covered by the company. Esmeralda Schiffahrts and its insurers have confirmed that they will cover the costs of the salvage and every other eventuality, including \$1 billion (R9.8bn) insurance cover to clean up the pollution. **Source : Cape Times**







VAN BEEST B.V. Manufacturer and Supplier of wire rope- and chain fittings. Registered trade marks 'Green Pin' and 'Excel'

















Tel. : +31 184 41 33 00

E-mail: sales@vanbeest.com

www.vanbeest.com

VOS THEIA ASSISTS A LADYBUG OFF MALTA



The 2011 built PAN flag vehicle carrier **A LADYBUG** offshore Grand Harbour, Malta of which on Saturday 10th August, 2013 she informed Valletta Port control that she heaved up anchors from OPL Malta due to strong NW wind and vessel was not under command due to no fuel and no engines. After a whole day of dragging anchors while trying to anchor again in Area 3 she informed vessels about her situation including the partly loaded oil/chemical tanker **FAOUE** and the gas carrier **GAZ INTERCEPTOR**.



On Sunday 11th August, 2013 the 2011 built GIB flag anchor handling tug **VOS THEIA** left Valletta from Gun Wharf to assist the car carrier at Area 3. **Photo's : Capt. Lawrence Dalli - www.maltashipphotos.com ©**

**ALSO INTERESTED IN THIS FREE MARITIME NEWSCLIPPINGS ?
PLEASE VISIT THE WEBSITE :
WWW.MAASMONDMARITIME.COM
AND REGISTER FOR FREE !**



The **STRENGTH** enroute Rotterdam – **Photo : Cees van der Kooij ©**



Crewing Solutions

TOS is an international service provider in crewing solutions, global ship delivery and ship management.







Energy & Maritime Solutions

Contact us: +31 10 436 62 93 • www.tos.nl • info@tos.nl

MOL LNG carrier rescues a fisherman from disabled boat

Mitsui O.S.K. Lines, Ltd. announced that on August 17, the MOL-managed LNG carrier **Energy Advance** found and rescued one fisherman on a fishing boat that had been drifting without sufficient fuel about 300km east of the Mindanao Island, said in the company's press release. The rescue went as follows:

At 13:00 of August 17 (local time), the **Energy Advance**, out of Sodegaura, Japan, bound for Dampier, Australia, found a fishing boat that had run out of fuel. At 13:44 on the same day, the fisherman aboard the fishing boat was rescued. He was turned over to the Port Authority of the Republic of the Philippines at 13:55 on August 18.

300 maritieme professionals gezocht voor Recordpoging Maritieme Gastlessen 2013

Tijdens de **Maritime Week 2013** wordt gestreefd het record Maritieme Gastlessen te verbreken. In één week tijd door het hele land minimaal 300 maritieme gastlessen en voordrachten organiseren. Dat is de ambitie. Bent u trots op uw werk en vindt u het leuk om erover te vertellen? Meld u dan nu aan voor het geven van een gastles tijdens de **Recordpoging Maritieme Gastlessen 2013**.

Gastdocenten gezocht

Om aan zoveel mogelijk jongeren te laten zien hoe leuk het is om in de maritieme sector te leren en te werken en de diversiteit van de mogelijkheden binnen de sector te laten zien, is de organisatie van de Maritime Week 2013 op zoek naar enthousiaste professionals. Van logistiek planner in de haven, tot ontwerper van superjachten, en van kapitein op een cruiseschip tot pionier in opkomende economieën. Bent u trots op uw werk, vindt u het leuk om erover te vertellen en kunt u daar een uurtje voor vrijmaken? Doe mee!

Inhoud gastles

Als enthousiaste werknemer kunt u jongeren en kinderen meenemen op ontdekkingsreis door de maritieme wereld. U vertelt vanuit uw eigen perspectief hoe het is om in de maritieme industrie te werken en hoe divers die eigenlijk is. U kunt de les geven in uw eigen netwerk (scholen, scouting, verenigingen etc.) of de organisatie van de Maritime Week kan u in contact brengen met een geïnteresseerde partij in uw regio. En wat denkt u van het geven van de les bij uw bedrijf? De ervaring van de leerlingen wordt dan intenser! Op het aanmeldformulier kunt u uw voorkeuren aangeven.

De gastles voor de recordpoging dient gegeven te worden in de **Maritime Week**, tussen 31 oktober en 8 november 2013. De gastlessen van de campagnes '**Zeebenen in de klas**' en '**Water Estafette**' in deze periode tellen ook mee voor de recordpoging. Op vrijdag 8 november wordt tijdens het onderdeel '**Future Pioneers**' op Europort bekendgemaakt of de doelstelling gehaald is.

Aanmelden

Enthousiast geworden? Aanmelden is mogelijk op www.maritimeweek.nl (directe link: Aanmeldformulier Recordpoging Maritieme Gastlessen). Voor meer informatie kunt u contact opnemen met [Linda te Veldhuis](mailto:Linda.te.Veldhuis@scheepsbouw.nl) van Scheepsbouw Nederland via 010 44 44 333 of lve@scheepsbouw.nl

Maritime Week

Van 31 oktober tot en met 9 november wordt de Nederlandse maritieme sector ruim een week in de schijnwerpers gezet. Tijdens deze derde editie van de **Maritime Week**, wordt aandacht gevestigd op het innovatieve karakter, de gezonde handelsgeest en de duurzame focus van de sector. Het thema is **'SAMEN WELVAREND'** en de officiële start vindt plaats tijdens het **Maritime Awards Gala** op 31 oktober. De **Maritime Week 2013** wordt georganiseerd door Nederland Maritiem Land met ondersteuning van Scheepsbouw Nederland. Zie voor meer informatie en het programma www.maritimeweek.nl

Death toll from Philippine ship collision rises to 64



The death toll from the fatal collision between a passenger ship and a cargo vessel in Cebu province of central Philippines rose to 64 by Tuesday noon, Philippine Coast Guard (PCG) said. Rescuers are still searching for the 56 missing. The number of rescued passengers remained at 750.

The ill-fated passenger ship **MV St. Thomas Aquinas** collided with **MV Sulpicio Express 7** cargo ship in Talisay city of Cebu last Friday night. The passenger ship, carrying 870 people on board, sank after the collision. Due to oil spilling from the passenger ship, Cebu province declared

a state of calamity on Monday. Source : China Daily

NAVY NEWS

MariFlex Fire Fighting services, 24 hours per day, 365 days per year!



Co-shirt sponsor
Football club
Sparta Rotterdam

MariFlex  **Group**

Organizer
MariFlex Open Darts
Tournament

Professionals in liquid cargo handling

Kon.Wilhelminahaven zz.22, 3134 KG Vlaardingen. Port no 650. The Netherlands. Phone (24h) +31 (0)10-434 44 45. info@MariFlex.net - www.MariFlex.net

Submarine review ordered after deadly explosion

India has ordered checks on the weapons safety systems of all its submarines after a deadly explosion on a vessel last week which is thought to have killed 18 crewmen, its defence minister said. AK Antony also said naval divers were yet to fully access the Russian-built **INS Sindhurakshak** which sank in a Mumbai harbour last Wednesday after a series of explosions in which munitions ignited. "Extensive checks on weapons-related safety systems and standard operating procedures on all operational submarines of the Indian navy have been ordered," Antony told Parliament. India

currently has nine functional Russian-built and four German-origin diesel-fired submarines besides a nuclear-powered submarine which Moscow has leased to the Indian navy.



The fully-armed submarine is resting on the bottom of the harbour and Antony said divers and engineers were struggling to re-float it because of holes in its previously water-right compartments. "Globally-renowned professional salvage agencies have been approached and they are undertaking the study of salvage operations," Antony told Parliament's upper house. "There is also an offer of help from Russia where the refit and upgrade had been undertaken," he added. The disaster, the navy's worst since the sinking of a frigate by a Pakistani



submarine in 1971, has cast a shadow over India's defence capabilities as it seeks to counter a military build-up by an increasingly assertive China. Just days before, India had launched its first domestically-built aircraft carrier and began sea trials for the first Indian-made nuclear submarine, trumpeted as a 'giant stride' for the country. **Source : The Himalayan Times**

submarine in 1971, has cast a shadow over India's defence capabilities as it seeks to counter a military build-up by an increasingly assertive China. Just days before, India had launched its first domestically-built aircraft carrier and began sea trials for the first Indian-made nuclear submarine, trumpeted as a 'giant stride' for the country. **Source : The Himalayan Times**



An **F-35B Lightning II** aircraft takes off from the amphibious assault ship **USS Wasp (LHD 1)** during the second at-sea F-35 developmental test event. The **F-35B** is the Marine Corps variant of the joint strike fighter and is undergoing testing aboard **WASP**. – **Photo : US Navy**

Taiwan to donate three patrol boats to The Gambia

Taiwan will donate three more patrol boats to diplomatically The Gambia to help strengthen its ability to patrol its coast, the Ministry of Foreign Affairs said Tuesday. The African country will officially take over the boats at a ceremony there on Aug. 23 that will be attended by Gambian President Yahya J.J. Jammeh, said Winston Hu, deputy director-general of the ministry's Department of West Asian and African Affairs.

The 8-ton boats, which are already in The Gambia, will "help Gambian maritime law enforcement authorities combat drug trafficking and smuggling," Hu said. Taiwan donated four 50-ton patrol boats in 2009 to help the West African country strengthen its naval defenses and maritime patrol capabilities, the ministry said. The decision to donate more patrol boats to The Gambia came after one of those four boats previously donated suffered serious damage, the ministry said. The Gambia is one of Taiwan's 23 diplomatic allies. **Source : Focus Taiwan**

SHIPYARD NEWS



THB Verhoef bv
Key components for medium speed diesel and gas engines

MARKISCHES WERK GOETZE DUAD Miba MARIDIS GmbH
Innovation in Motion Maritime Diagnostic & Service

thbverhoef.com

Zadelmakerstraat 6, 2984 CC Ridderkerk (Rotterdam region), T: +31 180 412183, F: +31 180 418757, E: sales@thbverhoef.com

Keppel to build fifth accommodation semi for Floatel at about US\$280 million

Keppel FELS Limited (Keppel FELS) has been awarded a contract worth about US\$280 million by **Floatel International Ltd (Floatel)**, to build its fifth accommodation semisubmersible (semi) for delivery in 4Q 2015, said in the company's press release. **Keppel FELS** previously delivered the accommodation semis, **Floatel Superior** and **Floatel Reliance**, in 2010 and is currently constructing two more - **Floatel Victory** and **Floatel Endurance**.

The new semi will be a sister vessel to Floatel Victory and will be built to Keppel's proprietary SSAUTM5000NG design.

Mr Wong Kok Seng, Managing Director (Offshore) of **Keppel Offshore & Marine** and Managing Director of **Keppel FELS** said, "We have a strong track record in the design and construction of accommodation semis. This fifth order is a reflection of the win-win partnership we have built with Floatel, the strength of our rig designs and the reliability of our execution. The SSAUTM5000NG is customised for operations in deep and harsh environments with world class safety and efficiency." Able to accommodate up to 500 persons in one- and two-man cabins, the new semi will have state of the art accommodation and recreational facilities which provide increased comfort for its occupants.

The new semi will incorporate the latest technology such as Dynamic Positioning (DP) 3 capability and enhanced station-keeping, enabling it to operate securely alongside fixed platforms, floating platforms and Floating Production Storage and Offloading Vessels, with a full complement of deck cranes, large open deck area, workshops and fire fighting capabilities. Floating accommodation platforms are needed to provide additional living quarters for drilling and production personnel. Such support is required during hook-up and commissioning in the development phase, for maintenance and upgrading during the production phase, as well as for decommissioning. **Source : PortNews**

PLEASE MAINTAIN YOUR MAILBOX, DUE TO NEW POLICY OF THE PROVIDER, YOUR ADDRESS WILL BE "DEACTIVATED" AUTOMATICALLY IF THE MAIL IS BOUNCED BACK TO OUR SERVER
If this happens to you please send me a mail at newsclippings@gmail.com to reactivate your address again, please do not write this in the guestbook because I am not checking this guest book daily.

Bahri joins MOU studying Saudi super yard

Singapore's **Sembcorp Marine** has signed a Memorandum of Understanding (MOU) with **Saudi Aramco** and the **National Shipping Company of Saudi Arabia (Bahri)**, one of the largest shipping companies in the world, with the objective of preparing feasibility assessment aimed at the development of a world-class shipyard in the Kingdom of Saudi Arabia. The proposed yard will provide engineering, manufacturing and repair services related to rigs, platforms, commercial vessels and offshore service vessels. Bahri says that, under the MOU, the three parties will prepare a detailed assessment that will include examination of all activities from construction operations and commercial planning to supply chain development required for the three equity partners to make a final investment decision. It says that the MOU will remain valid until an investment decision is made or terminated within 15 months from its effective date.

Saudi Aramco and **Sembcorp Marine Ltd** have previously completed preliminary studies leading to this detailed assessment phase, in which Bahri is now participating as a new partner. Within Bahri, the initiative will be managed by a Gas & Offshore Business Unit that is currently being established. This unit will also explore other investment opportunities in the offshore services industry in pursuit of the company's strategy of growing and diversifying its business activities. **Source : MarineLog**

ROUTE, PORTS & SERVICES

 AEGIR Marine	STERN TUBE SEAL SERVICE, PROPULSION SERVICE AND SPARES +31 343 432 509 STERNTUBESEAL.COM PROPULSIONSERVICE.COM	 AMPS
--	---	--



The **WATERPOORT** with the **ARCTIC DAWN** enroute Urk - Photo : Jan Plug ©

G E Shipping takes delivery of a Medium Range product carrier

The **Great Eastern Shipping Company Ltd.**(GE Shipping) took delivery of a 2004 built Medium Range product carrier "**Jag Prabha**"(about 47,900). With the induction of "**Jag Prabha**", the company's fleet stands at 29 vessels, comprising 21 tankers(8 crude carriers, 12 product tankers, 1 LPG carrier) and 8 dry bulk carriers(1 Capesize, 3 Kamsarmax, 4 Supramax) with an average age of 9.0 years aggregating 2.37 mn dwt. The Company's current order book stands at 5 vessels comprising 2 new building Kamsarmax dry bulk carriers, 1 new building Medium Range(MR) product tanker, 1 second hand 2005 built Medium Range(MR) product tanker and 1 second hand 1994 built Very Large Gas Carrier(VLGC). Source: **Great Eastern Shipping Company Ltd.**

13386TEU "COSCO ENGLAND" christened and delivered

On August 15, the christening ceremony of 13386-TEU container ship **MV. COSCO ENGLAND** was grandly held at **Nantong COSCO KHI Ship Engineering**. Mr. Hou Liping, Deputy Managing Director of COSCON, Mr. Han Chengmin, President of NACKS and other guests from COSCON, COSCO Mercury, COSCOSHIP and American Bureau of Shipping attended and witnessed the ceremony. Ms. Song Xiaoyun, COSCON's distinguishing guest from FAW-VOLKSWAGEN, christened the new ship, said in the company's press release.

MV. COSCO ENGLAND is the third of a series of eight 13,386 TEU vessels being built for COSCON by Nantong Shipyard (NACKS). The **COSCO ENGLAND** will be deployed on the COSCON CKYH Joint North Europe Express Service 7 (NE7). The port rotation of CKYH Joint North Europe Express Service 7 (NE7) is: Shanghai, Nansha, Hong Kong, Singapore, Hamburg, Rotterdam, Felixstowe, Antwerp, Singapore, Nansha, Yantian, Kaohsiung and Ningbo.



MY MERIDIAN moored in Aalesund, Norway on 19.08.2013 –Photo : Jan-Paul de Wilde ©

**ANY SHIP OR DESTINATION...
WE DELIVER**

www.redwise.com



**Ship delivery
Crew management
Maritime recruitment**

Check our website!

Follow us!



Redwise
GLOBAL SHIP DELIVERY & CREWING

Baltic Dry Index up to 1,145 points

On August 20, 2013, the **Baltic Dry Index** climbed to 1,145 points, up 30 points (2.69%) against the level of August 19.

BDI is a number issued daily by the London-based Baltic Exchange. Not restricted to Baltic Sea countries, the index provides "an assessment of the price of moving the major raw materials by sea. Taking in 23 shipping routes measured on a timecharter basis, the index covers Handysize, Supramax, Panamax, and Capesize dry bulk carriers carrying a range of commodities including coal, iron ore and grain. Because dry bulk primarily consists of materials that function as raw material inputs to the production of intermediate or finished goods, the index is also seen as an efficient economic indicator of future economic growth and production.

On 20 May 2008, the index reached its record high level since its introduction in 1985, reaching 11,793 points. On 3 February 2012, the index had dropped 647 points, the lowest since 1986. **Source : PortNews**



Herewith some pictures taken by [BUREAU VOGTSCHMIDT bv](#) acting as MWS for towage approval for the POWER BARGE [ORHAN BEY KPS7](#) (142X 42,5M, displacement 22500 TONS) owned by [KARADENIZ POWERSHIP](#) in tow



of the [OSMAN KHAN](#) (EX OCEANIC) from Turkey to Lebanon , as can be seen the tug [OSMAN KHAN](#) is still in a very good condition as the 170 ton BP [ex.OCEANIC](#) was recently sold to [KARADENIZ](#) and is managed by [ATA TOWING and SALVAGE.](#), after extensive trials and replacement of the main tow-wire the [OSMAN KHAN](#) towed the Powerbarge uneventful with an average speed of 7,5 knots to Lebanon where she delivered her tow safely

ENJOY THE PICTURES OF THIS BEAUTIFUL LADY !!



Aker Solutions wins contract for Johan Castberg floater

Aker Solutions won a contract from Statoil to conduct an extended concept study for the floater for the **Johan Castberg** oilfield development in the Barents Sea. The contract, worth NOK 250 million, includes options for further work, said in the company's press release.

"This is an exciting opportunity to take part in the development of a major new oil field in northern Norway," says Per Harald Kongelf, regional president for Norway at Aker Solutions.

Aker Solutions has previously conducted concept studies for the **Johan Castberg** field, which is estimated to hold between 400 million and 600 million barrels of oil. The Statoil-operated field is located about 240 kilometres north-west of Hammerfest.



The **ASTRID** enroute from Poland to Mauretania made a bunker stop at the Everingen (Westerschelde)

Photo : Wim Kosten – www.maritimephoto.com (c)

Kalapara to have third sea port

The government is mulling to set up a port on the bank of the River Ramnabad in Kalapara upazila. A submarine slation will also be set up in the area. Shipping Minister Shahjahan Khan came up with the announcement after visiting Charipara area, a proposed site of the port, in the upazila on Saturday.

The authorities have taken a plan to set up the country's third sea port at a cost of Tk 11,000 crore and a PDPP (Pre-development Project Proposal) has already been prepared in this regard, said the minister. The cabinet already approved the proposal to establish the port which would be placed before JS in September to get its nod, he said.

Earlier, a team led by Captain Arif Mahmud, member of Chittagong Port Authority (Harbor and Marine), visited the spot on July 17 last year. During the visit, the team found many positive signs to set up deep sea port in the area as it is deeper than Mongla and Chittagong sea ports, said Arif Mahmud. On May 21 this year, the minister at a public rally had announced that the third port will be set up in Kalapara. **Source: The Daily Star**

.... PHOTO OF THE DAY



Op Terschelling wordt drie keer per jaar een demonstratie gegeven van de lancering van de roeireddingboot middels paarden. Tien of twaalf Friese paarden trekken de roeireddingboot "**Secretaris Schumacher**" op de lanceerwagen over duin en strand, waarna vier paarden de combinatie in zee brengen. Op de foto de tewaterlating. De roeiers halen hun riemen pas tevoorschijn als de wagen ver genoeg in zee staat en de paarden zijn losgekoppeld. Alleen de stuurriem is in positie. De schipper geeft het sein en gooit de sliphaak los, gelijktijdig trekken vier andere paarden de lanceerwagen aan de disselboom op het droge en glijdt de reddingboot in zee. Terschelling is vrijwel zeker de enige plaats ter wereld waar een roeireddingboot nog met paarden in zee wordt gebracht. De "**Secretaris Schumacher**" uit 1900 is bovendien de enige nog varende 'overlevende' uit het roeireddingboot verleden van Nederland. Duizenden toeschouwers komen dan ook op de demonstratie van dit oude ambacht af. **Foto Jan Heuff ©**

The compiler of the news clippings disclaim all liability for any loss, damage or expense however caused, arising from the sending, receipt, or use of this e-mail communication and on any reliance placed upon the information provided through this free service and does not guarantee the completeness or accuracy of the information

UNSUBSCRIBE / UITSCHRIJF PROCEDURE

To unsubscribe click [here](http://www.maasmondmaritime.com/uitschrijven.aspx?lan=en-US) (English version) or visit the subscription page on our website.

Om uit te schrijven klik [hier](http://www.maasmondmaritime.com/uitschrijven.aspx?lan=nl-NL) (Nederlands) of bezoek de inschrijvingspagina op onze website.