

DAILY COLLECTION OF MARITIME PRESS CLIPPINGS 2007 – 289



Number 289 * COLLECTION OF MARITIME PRESS CLIPPINGS *** Thursday 13-12-2007**

News reports received from readers and Internet News articles taken from various news sites.

THIS NEWSLETTER IS BROUGHT TO YOU BY :



VLIERODAM WIRE ROPES Ltd.

wire ropes, chains, hooks, shackles, webbing slings,
lifting beams, crane blocks, turnbuckles etc.

Nijverheidsweg 21 3161 GJ RHOON The Netherlands

Telephone: (+31)105018000
(+31) 105015440 (a.o.h.)

Fax : (+31)105013843

Internet & E-mail

www.vlierodam.nl
info@vlierodam.nl



**The GRANDE NIGERIA seen approaching the IJmuiden locks
Photo : Piet Sinke ©**

SVITZER
OCEAN TOWAGE



PARTNERS IN POWER

SVITZER OCEAN TOWAGE

Jupiterstraat 33
2132 HC Hoofddorp
The Netherlands

Telephone : + 31 2555 627 11
Telefax : + 31 2355 718 96
E-mail: smitwijs.sales@svitzerwijismuller.com

**DO YOU HAVE PICTURES OR OTHER SHIPPING RELATED INFORMATION FOR THE
NEWS CLIPPINGS ?? PLEASE SEND THIS TO :**

newsclippings@gmail.com

EVENTS, INCIDENTS & OPERATIONS



The **KING OF SCANDINAVIA** seen approaching IJmuiden Port

Photo : Piet Sinke ©

Amid tensions over Spratlys, Vietnam seizes Chinese ships

DAILY COLLECTION OF MARITIME PRESS CLIPPINGS 2007 – 289

Vietnam has seized four vessels registered in China and Hong Kong for violating Vietnamese territorial waters, a border police officer confirmed Monday.

'We captured three ships and one barge on Friday last week for violating Vietnamese waters,' said Nguyen Van Khanh, head of Border Post 328 in central Quang Ngai province. 'They entered Vietnamese waters without asking for Vietnam's permission.'

Vietnamese press reported that two of the ships were registered in China and two in Hong Kong. They were staffed by Indonesian crews, who said they were taking the boats to Indonesia, where they planned to operate them.

The seizures come amid rising tensions between Vietnam and China regarding sovereignty over the Spratlys and the Paracels, two island chains in the South China Sea with what are believed to contain substantial petroleum reserves.

On Sunday, several hundred demonstrators staged rare public protests in front of the Chinese embassy in Hanoi and the Chinese consulate in Ho Chi Minh City. Police allowed the protests for about an hour against last month's move by China to establish an official government locality to administer the Spratlys.

In a statement released Monday by Vietnam's state media, government spokesman Le Dung said the protests had not been officially orchestrated.

'This is a spontaneous act, not allowed by Vietnamese authorities,' Dung said, according to the website of the Ministry of Foreign Affairs. 'When the incident happened, Vietnamese security forces arrived at the areas quickly to explain and to require people to stop the demonstration.'

Border police officer Khanh said the 13 Indonesian crew members of the seized ships were being held for investigation.



The **QUEEN VICTORIA** seen arriving in the Port of Rotterdam during her maiden voyage
Photo : Piet Sinke ©

Dutch government considers creation of huge offshore island

The Times newspaper in the UK and various other new sources report that the Dutch government is considering a radical plan to build a £7 billion island in the shape of a tulip in the North Sea.

The idea behind the concept is to relieve pressure on its overcrowded cities and protect the coastline from rising sea levels.

The Times said Jan Peter Balkenende, the prime minister, has asked a government advisory body, the Innovation Platform, to study the feasibility of reclaiming land about twice the size of the Isle of Wight in the UK.

The findings will be presented to MPs and engineers on January 17th, said The Times.

"Tulip Island is the brainchild of Joop Atsma, a member of Balkenende's centre-right Christian Democratic Appeal party, who points out that about half the country's 16 million people live below sea level," said the report, noting that he is proposing to build an island of between 120,000 and 250,000 acres off the coast of the Randstad, the country's most densely inhabited region around Amsterdam, Rotterdam, the Hague and Utrecht. **Source : Dredging News online**



Dockwise Yacht Transport's **YACHT EXPRESS** seen arriving in Genoa

Photo : Fop Leder ©



The Maritime Information & Service Provider

WWW.DIRKZWAGER.COM



KONINKLIJKE
ROYAL DIRKZWAGER
DIENSTZAGER



The HAPAG-LLOYD container liner **BANGKOK EXPRESS** seen passing the submerging **YACHT EXPRESS** in the port of Genoa where Dockwise latest will load her first yachts for transportation to the USA

Photo : Fop Leder ©

Bisso Marine launches four tugs



Bisso Marine recently mobilized the 700 ton capacity derrick barge **CAPPY BISSE** to Gulfport, Mississippi, to launch four newly built tractor-type tugs. In a single day, the four identical vessels, each weighing 650 tons, were rigged up, lifted and safely placed into the water.



Though Bisso Marine did not disclose the shipyard, it is recognizable as Edison Chouest's Gulf Ship facility in Gulfport.

Edison Chouest Offshore (ECO) announced last summer that it had received a contract to provide four 110- ft tractor tugs to assist Cheniere Energy at its LNG receiving terminal at Sabine Pass. According ECO Operations Coordinator Roy Cheramie, another four tugs have been contracted for a nearby operation. This is understood to be ExxonMobil Corp.'s Golden Pass LNG terminal.

The first three Sabine Pass tugs are scheduled for delivery in December 2007, with the fourth to be delivered shortly thereafter. The Golden Pass tugs are contracted for a March 2009 delivery. All the vessels are being constructed at Gulf Ship. **Source : MarineLog**



The **KIBOKO II** seen assisting the **JO SYPRESS** in the port of Mombassa (Kenya)
Photo : Lennert Teerling ©

Police search for live submarine flare

POLICE fear a suspected live submarine flare which washed up on a central Queensland beach last week may have been picked up by a member of the public.

A spokesman said a woman contacted police on Friday after spotting a suspicious item on a beach adjacent to Sable Chief Rocks, near Gladstone.

She described the item as being shaped like a bullet with a grey pointed end and a stainless steel cylindrical body and took a photo of it. However, when police arrived at the beach they were unable to locate the item and fear a member of the public may have removed it without knowing its potential danger.

The photograph was viewed by military personnel who indicated the item appeared to be a submarine launched flare that could possibly be live. **Source : The Australian**

Vlaanderen investeert in nieuw onderzoeksschip

DAILY COLLECTION OF MARITIME PRESS CLIPPINGS 2007 – 289

Maandag namiddag hebben minister-president Kris Peeters en minister Patricia Ceysens namens de Vlaamse regering de plannen rond de bouw van een nieuw onderzoeksschip kenbaar gemaakt. Het schip moet de opvolger worden van het oceanografisch schip "**Zeeleeuw**", dat sinds 2001 operationeel is.

Het onderzoeksvaartuig, dat de naam "**Simon Stevin**" zal meekrijgen, zal hoofdzakelijk worden ingezet voor academisch kustgebonden oceanografisch onderzoek in de zuidelijke bocht van de Noordzee, als trainingsplatform voor studenten uit de marinewetenschappelijke en maritieme opleidingen en als testplatform voor nieuwe marine of maritieme technologieën. Het schip moet een lengte krijgen van zo'n 35 meter en zal uitgerust zijn met alle standaard staalnameapparatuur en met hoog ontwikkelde sonartechnieken. Het zal een investering van om en bij de 10 miljoen euro vertegenwoordigen. Verwacht wordt dat het vaartuig binnen twee jaar in gebruik zal worden genomen.

Bron : De Lloyd



The **VOS TRADER** commenced yard trials

Photo : Huib Trommel ©

CASUALTY REPORTING

 **MULTRASHIP**
TOWAGE & SALVAGE

Tel: +31 115 645000 - www.multraship.com



The POL-LEVANT owned **KROKUS** encountered Engine problems December 8th and was not able to proceed past Ushant, the cargo vessel was taken under tow of the tug **ABEILLE BOURBON** and delivered safely in Brest December 11th with a lot of damage to the cargo onboard as ca be seen above.

Photo : Jacques Carney ©

STOLT TEAL breaks down

A broken down tanker carrying 6,300 metric tonnes of gasoline was drifting towards Beachy Head this Tuesday afternoon.



Photo : Dirk Kleijn ©

The tanker, **Stolt Teal**, carrying 21 people, was seven-and-a-half miles offshore. Coastguards said the tanker was drifting even with its anchor down while repairs were taking place. A tug was sent to the tankers aid.

MS ANTARES IN TURKU-TRAVEMÜNDE SERVICE / GROUNDING ON 10 DECEMBER 2007

Ms Antares touched ground on Monday, 10 December 2007, evening, on her way from Turku, Pansio harbour to Travemünde. **Ms Antares** returned to Turku, where the damages were inspected. The damages are of such nature that **ms Antares** has to be drydocked.

The cargoes loaded onboard ms Antares have to be discharged. The discharging will be done in Turku, Westharbour, on Tuesday, 11 December 2007.

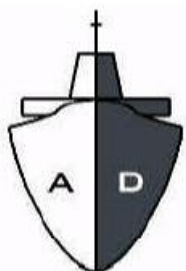
We regret any inconvenience caused to our customers. We will revert to traffic arrangements as soon as possible.

Source : FINNLINES OYJ / PLC

NAVY NEWS

THIS SECTION IS BROUGHT TO YOU BY :

ANGLO DUTCH SHIPBROKERS bvba



Waterstraat 16
2970 SCHILDE
BELGIUM
Tel : + 32 3 464 26 09
Fax : + 32 3 297 20 70
e-mail : anglodutch@pandora.be



Sailors stationed aboard guided-missile cruiser **USS Lake Erie (CG 70)** man the rails and render honors to **USS Arizona Memorial** and Pearl Harbor survivors as part of a pass-in-review during a joint U.S. Navy/National Park Service ceremony commemorating the 66th anniversary of the attack on Pearl Harbor. More than 2,500 distinguished guests and the general public joined Sailors, Pearl Harbor survivors and their families and friends on board Naval Station Pearl Harbor for the annual observance

Photo : US Navy

Problems found with welds on Virginia-class submarines

Northrop Grumman's Newport News shipyard and the U.S. Navy are inspecting welds on all Virginia-class submarines after finding problems with welds in those vessels.

Katie Dunnigan, a spokeswoman for Naval Sea Systems Command spokeswoman, said Monday that the Navy, Northrop Grumman and its shipbuilding partner, General Dynamics Electric Boat, started assessing completed welds through record reviews, additional inspections and testing.

The assessment is thought to have delayed the sea trials and delivery of the **USS North Carolina**, which Northrop Grumman planned to hand over to the Navy at the end of the month.

A shipyard spokeswoman said last week that delivery has been pushed at least into January. **Source : boston.com**

US Ship In Ghana

AFRICAN PARTNERSHIP Station (APS) gave six Ghanaian military officers from the Western Naval Command a tour of three navy vessels on November 30 when they embarked Amphibious Dock Landing Ship **USS Fort McHenry (LSD 43)** and the Los Angeles class fast-attack submarine **USS Annapolis (SSN 760)**, the submarine accompanying APS.

The group also embarked a Landing Craft Unit Utility from Assault Craft Unit Two.

The visit was organized as part of APS' visit to Takoradi. **Annapolis** was participating in an information-sharing event designed to bolster the maritime domain awareness of APS partner countries in the region in keeping with the Chief of Naval Operations' Maritime Strategy for building trust and increasing collaboration among partners.

"The visit really helped our Ghanaian partners see all of the aspects of APS," Commodore of Africa Partnership Station, Capt. John Nowell said.

"They were truly appreciative of the role Annapolis and its sailors play in APS, and were very eloquent in expressing their heartfelt appreciation to the crew for the sacrifices they are making to help Ghana and the other APS partner countries."

Aboard **Annapolis**, the Ghanaians were able to see firsthand some of the unique capabilities of a submarine, a new experience for them because the Ghanaian Navy has no submarines.

The visitors contributed to the exchange of ideas on how the countries could improve maritime safety and security over the long term, improving prosperity and trade in the process.

"What you are doing is important for our Ghana and our Navy," said Ghanaian Navy Commodore Frank Daly, commanding flag officer of the Western Naval District. "The sharing of information regarding activities in our maritime environment will help our awareness very much."

Annapolis' participation in APS marked the first time a US Navy submarine has been used as a "partnership platform" to conduct personnel and information-exchanges.

It also demonstrated how the international community is collaborating in creative ways with African partners to achieve common goals regarding maritime safety and security, and stability.

SHIPYARD NEWS

THIS SECTION IS BROUGHT TO YOU BY :



info@disamaritime.com
www.disamaritime.com

Ketelaarstraat 5c
B-2340 Beere
Belgium

Tel : + 32 (0) 14 62 04 11
Fax : + 32 (0) 14 61 16 88



info@disacivil.com
www.disacivil.com



Shipyard workers and crew, hands rail on the cutter ladder of the **CSD Alodia** (Dragados Fleet) after her annual overhaul.

Photo : Antonio Acosta ©

Bollinger delivers Grand Slam

Lockport, Louisiana-based Bollinger Shipyards has delivered the PSV **Grand Slam** to Rigdon Marine, the fourth in the series of ten 4000-class PSVs on order. The **Grand Slam** is a 190-ft (58-m) x 46-ft (14-m) x 18-ft (5-m), diesel electric, DP-2 PSV, which features a capacity of 4,000 bbl of liquid mud in an oval, self cleaning segregated tank system. The vessel also has three x Z-Drives and two x large forward tunnel thrusters.

The six remaining Rigdon 4000-class PSVs will be delivered in approximate 45-day intervals through 3Q 2008.



The **KRISTIN SCHEPERS** was launched at the Damen-Galati yard December 12th

Photo : Huib Lievense ©

Two more for Damen

AMS of Australia adds tug duo to Dutch shipbuilder's swelling orderbook. Australian marine services group AMS has ordered two tugs at Damen in the Netherlands. The ATD 2412 units are already being built and will be delivered in June 2008.

General Dynamics NASSCO Lays Keel of First Product Carrier

General Dynamics NASSCO, a wholly-owned subsidiary of General Dynamics held a keel-laying ceremony for the first ship of its new class of product carriers (PC-1). The ship is being built for U.S. Shipping Partners and is scheduled to be delivered in early 2009.

The PC-1 class ship will be 600 feet long, displace about 49,000 deadweight tons and have a cargo capacity of 331,000 barrels. The ship is based on a design of DSEC, a wholly-owned subsidiary of Daewoo Shipbuilding and Marine Engineering of Okpo, Korea. Through its April 2006 agreement with DSEC, NASSCO has received detail designs and some components necessary to build the ship. NASSCO began construction of the ship in August. U.S. Shipping Partners previously announced that the ship will be named **Golden State**, the state nickname of California.

Source : Yahoo Finance

Indian shipyards find it hard to meet demand

INDIAN shipyards have registered a hike in orders from eight billion rupees to 155 billion rupees (\$5.7 billion) over the last five years, as per industry estimates.

Strong demand for cargo ships - coupled with the inability of market leaders China, Japan and South Korea to meet requirements - has propelled the flow of jobs to India. State-controlled units Cochin, Hindustan, Goa Shipyard and Mazagon Dock have dominated the scene. But private players L&T, Adani Group, SKIL Infrastructure, ABG and Bharti Shipyard are also acquiring new capability. And the Tata Group is also watching the scene.

DAILY COLLECTION OF MARITIME PRESS CLIPPINGS 2007 – 289

India's share of the worldwide shipbuilding market is estimated to reach almost US\$25 billion - more than 5 per cent - by 2020 due to abundant cheap labour and skilled manpower. And more than US\$2.5 billion is set to be invested to increase the capacity of Indian yards.

Indian companies have been negotiating with South Korea to build ships of more than 100,000 tonnes displacement. And New Delhi has announced the setting up of two yards expected to attract investments of US\$1 billion.

Domestic company Mercator recently announced two new yards, in Gujarat and Maharashtra states, with an investment of US\$400 million.

The chairman of Mumbai's Mazagon Dock, S K K Krishnan, recently spoke about the search for an international partner to design warships. Mazagon also aims to become a global design centre. Garden Reach Shipbuilders and Engineers in Kolkata is looking in a similar direction.

Global powerhouses such as Northrop Grumman from the US, DCN from France, Hyundai from Korea and British shipbuilder Bath Iron Works are expected to try to partner Indian outfits in modular shipbuilding.

So far, the problem is that India cannot meet the exponential jump in demand. Indian Navy chief Suresh Mehta said recently that the demand-supply gap for new warships will continue to rise.

Observers see an immediate need for 25 oil and gas supertankers as the Indian economy grows. Essar recently placed a US\$390 million order with China's STX (Dalian) Shipbuilding Co for six bulk carriers.

India's shipbuilding ability has been squeezed by a decade-long investment gap in the mid-1980s. **Source : Business Times**

ROUTE, PORTS & SERVICES

THIS SECTION IS BROUGHT TO YOU BY :



TOTAL VESSEL MANAGEMENT

K.P. van der Mandelelaan 34 - 3062 MB Rotterdam (Brainpark) - The Netherlands

Telephone : (31) 10 - 453 03 77
Fax : (31) 10 - 453 05 24
E-mail : mail@workships.nl
Website : www.workships.nl



The **Sun Princess** sailing after her first visit to Lyttelton, New Zealand. **Sun Princess** will become a familiar sight in Australian and New Zealand ports as she is based in Australia for year round cruising. The dredge **Pelican** is seen in the lower part of the photo carrying out routine dredging while **LPC Rescue** is approaching the cruise ship to take the pilot off. **Photo : Alan Calvert ©**

27,500dwt Ocean Tank Barge Sold

Penn Tug & Barge, Inc. of Stamford, CT has sold their U.S. flag 27,500dwt, oil barge "**Texas**" (ex-Bulkfleet Texas) to private interests. The 502' x 84' x 42' ocean tank barge was built in 1980 by General Dynamics of Quincy, MA as one of two deep notch, ship-shaped bow tug/barge units for Bulkfleet Marine of Houston, TX. Penn purchased the ABS +A1 classed tug/barge unit in 2000 and retained the tug in their fleet. "**Texas**" is capable of carrying abt. 205,744bbl capacity at her loadline draft of 34.5' in 16 inorganic zinc coated tanks. The single hull US Flag barge was last in clean petroleum service and phased out of service the end of 2005. New Owners took delivery of the barge in Tampa, Florida where she was laid up. They plan to re-flag the barge foreign and mobilize her to West Africa where she will be used in conjunction with their oil storage and transportation requirements in the region.

This was the 32nd ocean tank barge sold by Marcon International, Inc. of Coupeville, WA since the OPA'90 Rules & Regulations for mandatory retirement of single hull petroleum vessels by 2015 was implemented. Marcon acted as sole broker in the sale between the Buyer and Seller. **Source : Marcon**

Green Pin®				www.vanbeest.nl
Standard & Polar are DNV 2.7-1 Type approved!			DNV	VAN BEEST 

NEW WEBSITE

Herewith we have the pleasure to inform you that the complete recent edition of The Antillean Navigator can be found on the website of our Sponsor **SEAWINGS**, a company belonging to the Maduro-concern with Head Office at Curaçao, Netherlands Antilles.

To open the website click www.seawings.an

You will find **SEAWINGS N.V./HOME**

After opening you will see that there are nine selections possible, selection nr. 8 is the Antillean Navigator. After opening the introduction page, you will find a purple discription under « editor-in-chief/ publisher », you have to click same, indicating in Dutch the 51st edition of the periodical and then all 32 pages are within your reach.

There is copy right on the whole publication. To apply for reproduction of a certain article and/or pictures a written request should be made to navigator@scarlet.an

The articles are partially in the Dutch and the English language.
Pictures have under titles in both languages.

We wish you a pleasant reading,

John M. Kooijman, - Editor-in-chief and publisher.

The new edition is expected during the month of February 2008.

Diana Shipping Inc. Announces Delivery of Capesize Bulk Carrier

Diana Shipping Inc. a global shipping transportation company specializing in dry bulk cargoes, today announced that the Company has taken delivery of the 171,810 dwt Capesize dry bulk carrier "**Thalassini Niki**", renamed "**Salt Lake City**", built in 2005 by Daewoo Shipbuilding & Marine Engineering Co. Ltd. The agreement to purchase this vessel was originally announced on October 17, 2007.

As previously announced, "**Salt Lake City**" was purchased for US\$140 million and is chartered as of September 28, 2007 to Refined Success Ltd., guaranteed by Cosco (H.K) Shipping Co Ltd. for a period of minimum 59 to maximum 61 months, at a daily rate of US\$55,800 less 5% commission. Current employment is anticipated to generate approximately US\$96.2 million of gross revenues for the Company over the minimum scheduled period of the charter.

Including the newly-delivered "**Salt Lake City**", the Diana Shipping Inc. fleet currently consists of 18 dry bulk carriers (13 Panamax and 5 Capesize). The Company also previously announced the purchase of an additional Capesize dry bulk carrier, which is expected to be delivered in early February 2008, and two Capesize new-building dry bulk carriers that are expected to be delivered during the second quarter of 2010. A table describing the current Diana Shipping Inc. fleet can be found on the Company's website, www.dianashippinginc.com



The **KING OF SCANDINAVIA** seen assisted by the tugs **ARION** and **SVITZER MARKEN** into the port of IJmuiden
Photo : Piet Sinke ©

First of B.C.'s new super-ferries waylaid by storms

Gale-force winds forced the B.C.-bound **Coastal Renaissance** -- the first of B.C. Ferries' three German-built super-coastal-class boats -- to seek shelter off the coast of California last week.

The company website showed the ferry stopped in Los Angeles, apparently back on track on its 45-day journey from the Flensburger Schiffbau-Gesellschaft shipyard in Germany.



The BC Ferries **Coastal Renaissance** seen Saturday, 8 December 2007.
Photo : Robert Duckson ©

Storms forced the vessel, which has a capacity of 1,650 passengers and 370 vehicles, to seek shelter near Catalina Island. Once the weather system passed, the ferry resumed its journey and should arrive in Victoria later this week.

Later, the ferry heads for its permanent berth in Nanaimo for certification and crew training.

Flensburger has a \$334-million contract to build the three ferries. The next two are due to arrive in late January and mid-May. B.C. Ferries is still negotiating with Ottawa about whether it has to pay a combined \$100 million in taxes and duties on the three vessels -- a penalty paid for purchasing or building ships outside Canada.

Whether the ferry corporation will have to pay the **Coastal Renaissance's** \$33.3-million share of the duties upon crossing the border into Canada is still being discussed, said B.C. Ferries' Mark Stefanson. "We're still hoping the federal government will waive the duties," he said. "These ferries couldn't have been built in Canada."

Source : CanWest News Service

Paragon Shipping Inc. Takes Delivery of Its Eleventh Vessel

Paragon Shipping Inc. announced that it took delivery of its eleventh drybulk carrier, the **Golden Seas**.

This 74,475 dwt 2006-built Panamax vessel has been chartered to Bunge S.A. pursuant to a time charter with a remaining period of approximately 11 to 13 months at a rate of \$64,000 per day.

Michael Bodouroglou, Chairman and Chief Executive Officer of Paragon, commented, ``We are pleased to increase our fleet to eleven vessels with the delivery of the **Golden Seas**. This latest acquisition is in line with our strategy of acquiring modern vessels with secure employment for periods of one to three years, and further reduces our average fleet age to 6.5 years. Going forward, our strong balance sheet will allow us to continue building a diversified fleet through opportunistic purchases of modern vessels."

With the addition of this vessel, the Company's fleet consists of seven Panamax drybulk carriers, three Handymax drybulk carriers and one Supramax drybulk carrier, with an aggregate capacity of approximately 706,358 dwt.

Source : Press release Paragon Shipping

DYT Announces New Routes and Voyages

Following on the heels of a cooperative partnership with BBC Chartering & Logistics, **Dockwise Yacht Transport (DYT)**, the world's only float-on/float-off yacht transport service, has announced several new routes made possible by the lift-on/lift-off capabilities of BBC supplied vessels. Newly-set routes to Dubai (UAE), Southampton (UK) and Aarhus (Denmark) expand the Ft. Lauderdale-based shipping company's list of destinations, which currently include ports in the Mediterranean, North West Europe, the Caribbean, the Pacific West Coast of North America and Central America, and the South Pacific.

In addition to these new destinations, **Dockwise Yacht Transport (DYT)** and its Australian agents Aurora Global Logistics are also adding two extra voyages from the Mediterranean to Brisbane, Australia, to complement the already existing float-on/float-off yacht transport service to the South Pacific. The extra voyages in March and October will give clients better options to benefit from the cruising seasons in the South Pacific.

"With BBC's ships added to the mix of DYT's own fleet of four semi-submersibles, it is now possible for customers to choose from more ports of call in regions that before were either inaccessible or not serviced directly by DYT," said DYT President Clemens van der Werf. "The difference in the transport procedure will be that BBC ships will utilize the more traditional lift-on/lift-off service, while DYT ships will continue with their float-on/float-off operations. In both cases, DYT service managers and loading masters oversee all details of a customer's experience, from planning to implementation, insuring the safe delivery of yachts of all sizes, both power and sail."

Following is the schedule of the new destinations through 2008:

DAILY COLLECTION OF MARITIME PRESS CLIPPINGS 2007 – 289

From	Departing	To	Arriving
Port Everglades	End of January	Dubai	Early March
Port Everglades	Early April	Dubai	Early May
Genoa	Mid February	Dubai	Early March
Genoa	Mid April	Dubai	Early May
Genoa	Mid March	Brisbane	Mid April
Genoa	Mid October	Brisbane	Mid November
St. Thomas	Mid April	Aarhus	Early May
St. Thomas	Mid April	Southampton	End of March
St. Thomas	Mid May	Aarhus	Early June
St. Thomas	Mid May	Southampton	End of May
Southampton	Early October	Port Everglades	Mid October

A complete schedule of voyages is available at www.yacht-transport.com. As destination offerings may increase or change, clients are encouraged to check back periodically for updates.

MOVEMENTS



The **HELGOLAND** serves the route Eemshaven <> Borkum
Photo : Jan de Vreugt ©



The **MSC TOGO** seen in Liverpool, the container liner was formerly named **Nedlloyd Zeelandia**, and later **P&O Nedlloyd Los Angeles**.
Photo : Ruud Kempe ©

VERWACHTE TRANSPORTEN AAN DE MAASCENTER

13-12 12:00 uur Eide Fighter met de S 44

13-12 18:05 uur Thorax met de Ensco 85 voor Keppel Verolme

14-12 12:40 uur Irbis met de Union XII voor HI Ambacht

AIRCRAFT / AIRPORT NEWS

Ryanair vliegt vijf nieuwe bestemmingen aan uit Charleroi

De Ierse lagekostenmaatschappij Ryanair vliegt vanaf 5 maart op vijf nieuwe bestemmingen vanuit Brussels South Charleroi Airport. De verbinding met Londen Stansted wordt wel opnieuw stopgezet. Dat heeft de baas van Ryanair, Michael O'Leary, dinsdag aangekondigd tijdens een persconferentie.

DAILY COLLECTION OF MARITIME PRESS CLIPPINGS 2007 – 289

Ryanair doet er vanaf maart Bergerac, Limoges, Perpignan (alle drie in Frankrijk), Porto (Portugal) en Zaragoza (Spanje) bij. Om de vijf nieuwe verbindingen mogelijk te maken, wordt de luchthaven van Charleroi de basis van een vijfde Boeing 737-800. Ryanair stopt ook met de route Charleroi-Londen Stansted. Die verbinding werd pas halverwege dit jaar opnieuw opgestart.

De luchtvaartmaatschappij zal zo 26 bestemmingen aanvliegen vanuit Charleroi. Die moeten goed zijn voor 2,5 miljoen passagiers op jaarbasis, aldus Ryanair.

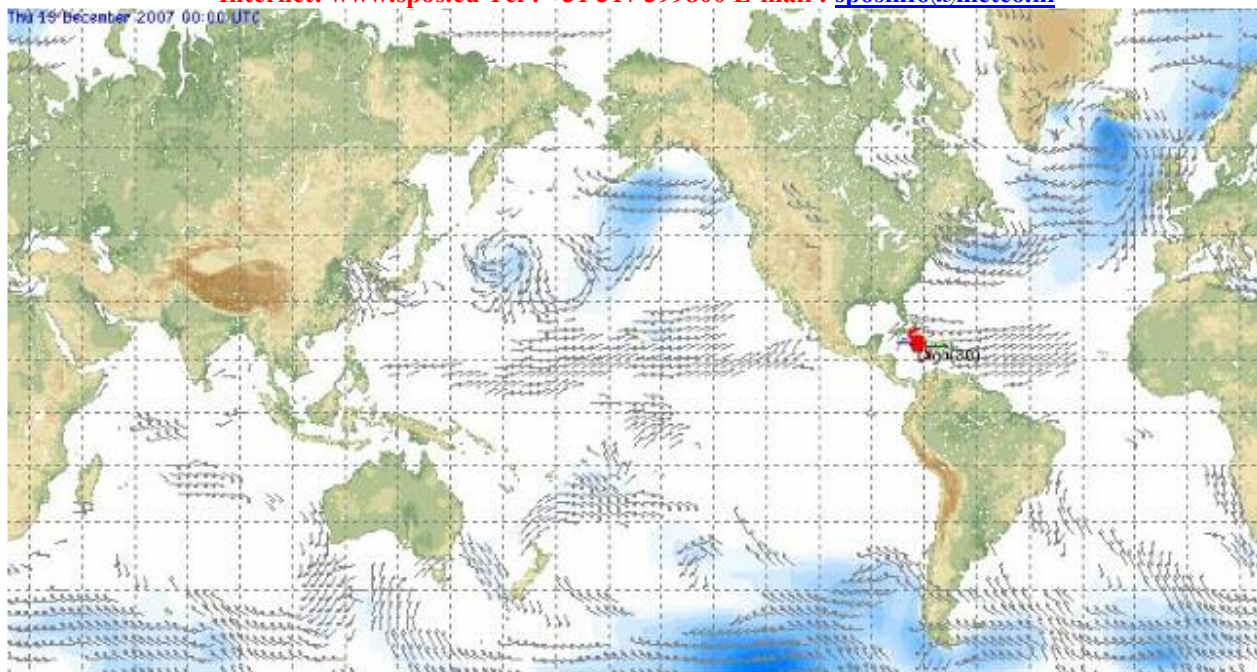
O'Leary haalde dinsdag opnieuw uit naar de Europese Commissie en haar houding in het dossier rond staatssteun aan onder meer KLM-Air France en Lufthansa. Ryanair, dat in 2004 zelf een deel van Waalse overheidssteun moest terugbetalen van de Europese Commissie, klaagde begin november nog de Commissie aan omdat deze klachten over Franse staatssteun aan de luchtvaartgroep KLM-Air France niet had onderzocht. **Bron : Het belang van Limburg**

MARINE WEATHER

THIS SECTION IS BROUGHT TO YOU BY :



Internet: www.spos.eu Tel : +31 317 399800 E-mail : sposinfo@meteo.nl



Today's wind (+6Bft) and wave (+3m) chart. Created with SPOS, the onboard weather information & voyage optimisation system, used on over 1000 vessels today.

.... PHOTO OF THE DAY

DAILY COLLECTION OF MARITIME PRESS CLIPPINGS 2007 – 289



The **AMER EVEREST** seen assisted by the tug **ARION** into the Ijmuiden locks
Photo : Piet Sinke ©

The compiler of the news clippings disclaim all liability for any loss, damage or expense however caused, arising from the sending, receipt, or use of this e-mail communication and on any reliance placed upon the information provided through this free service and does not guarantee the completeness or accuracy of the information. If you want to no longer receive this bulletin kindly reply with the word "unsubscribe" in the subject line.